



CONTEMPORARY DESIGN
MEETS DUTCH HERITAGE

UPHOLSTERY COLLECTIONS



CONTEMPORARY DESIGN
MEETS DUTCH HERITAGE

UPHOLSTERY COLLECTIONS





KOBE
INTERIOR DESIGN

KOBE'S DUTCH DESIGN MEETS DUTCH INDUSTRIAL HERITAGE

AT THEIR HEADQUARTERS, LOCATED ONLY A FEW MILES FROM THE CITY OF EINDHOVEN, KOBE HAS BEEN DESIGNING CURTAIN AND UPHOLSTERY COLLECTIONS WITH AN AUTHENTIC SIGNATURE FOR MORE THAN 35 YEARS. THUS, CONTRIBUTING IN THEIR UNIQUE WAY TO DUTCH DESIGN.

TWO OTHER DUTCH COMPANIES, PHILIPS AND DAF, ARE LINKED FOREVER TO DUTCH DESIGN AND THE EINDHOVEN REGION. IN THE 20TH CENTURY BOTH HAD A SIGNIFICANT INFLUENCE ON THE ECONOMICAL AND SOCIAL DEVELOPMENT OF THIS REGION.

DAF, A DUTCH AUTOMOBILE MANUFACTURER, MADE A LEGENDARY CONTRIBUTION TO DUTCH DESIGN WITH THE INTRODUCTION OF THE DAFFODIL 33. FOR A LONG TIME, THIS CAR, EQUIPPED WITH THE WORLD'S FIRST CONTINUOUSLY VARIABLE TRANSMISSION, HAS BECOME RECOGNIZED AS ONE OF THE ICONS OF THE PAST CENTURY.

PHILIPS IN TURN CONTRIBUTED IN A MAJOR WAY TO DUTCH DESIGN WITH THEIR LIGHT BULBS AND CONSUMER ELECTRONICS. FURTHER MORE, IT HAS LEFT A LASTING IMPRESSION ON THE CITY IMAGE OF EINDHOVEN. THE PHILIPS CLOCK TOWER BUILDING (DUTCH NAME: 'HET KLOKGEBOUW') IS A STRIKING EXAMPLE AS IT STILL BREATHES THE POWER OF PAST INDUSTRIAL GLORY AT THE SAME TIME AS HOSTING A MODERN CENTRE FOR INDUSTRIAL DESIGN TODAY.

STYLE AND DESIGN PERIODS FROM THE PAST ARE THE SOURCE OF TODAY'S CREATIVITY AND PRODUCT DEVELOPMENT. 'HET KLOKGEBOUW' INSPIRINGLY CONNECTS WITH KOBE'S DESIGN VISIONS. NOT ONLY DOES THE AMBIANCE OF THIS LOCATION PERFECTLY SUIT THE DAF 33, IT ALSO BRINGS OUT THE BEST IN KOBE'S CONTEMPORARY DESIGNS PRESENTED IN THIS BROCHURE. JUST AS IT DOES TO THE MULTI COLOURED OSORNO UPHOLSTERY FABRIC ENRICHING THE CAR'S INTERIOR.

THE KOBE TEAM.



rossin

All furniture presented in this brochure is provided by our partner Rossin, www.rossin.it

CONTEMPORARY DESIGN
MEETS DUTCH HERITAGE

WWW.KOBE.EU





CONTEMPORARY DESIGN
MEETS DUTCH HERITAGE

UPHOLSTERY COLLECTIONS

WWW.KOBE.EU

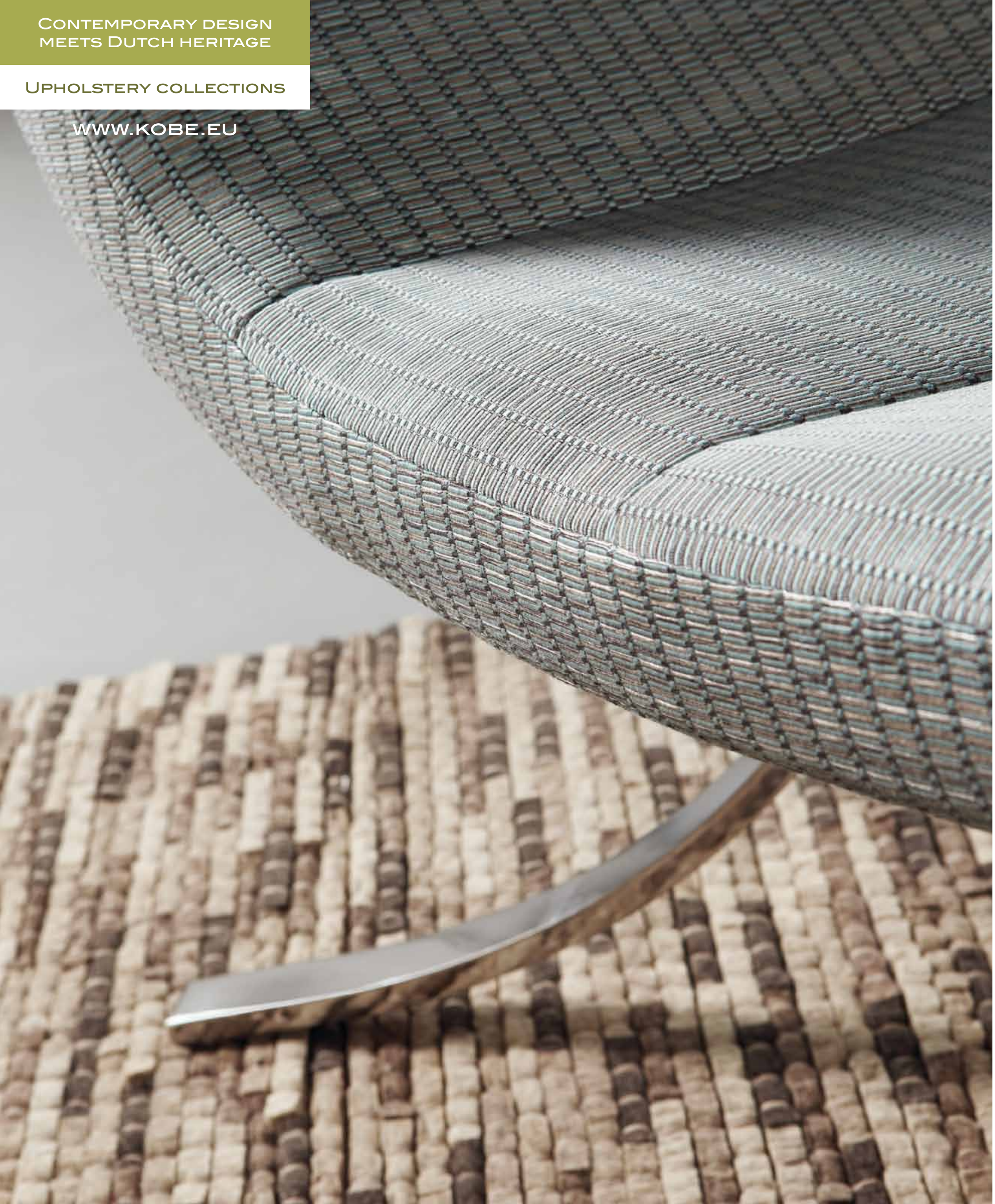
TERBIUM



CONTEMPORARY DESIGN
MEETS DUTCH HERITAGE

UPHOLSTERY COLLECTIONS

WWW.KOBE.EU





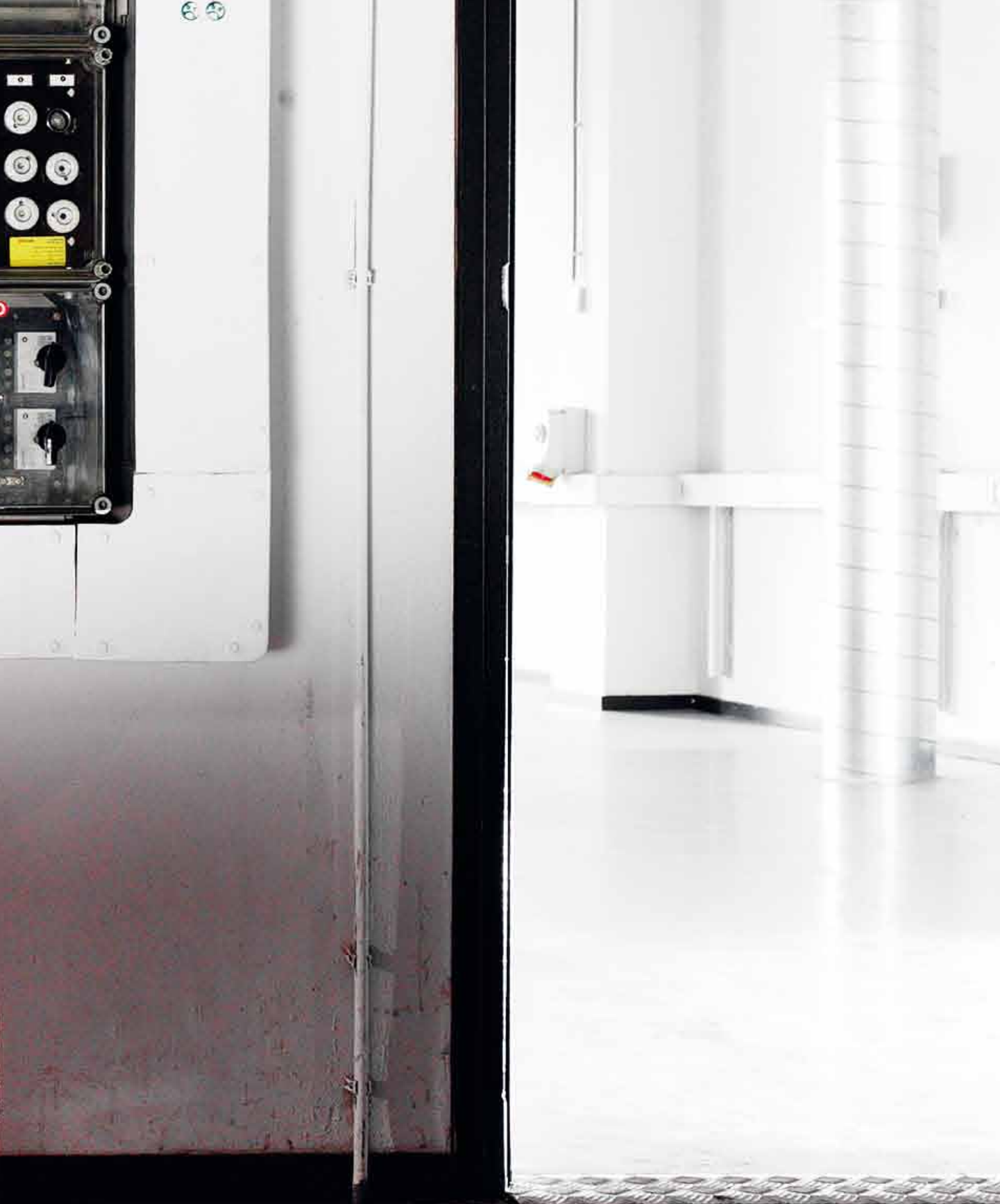
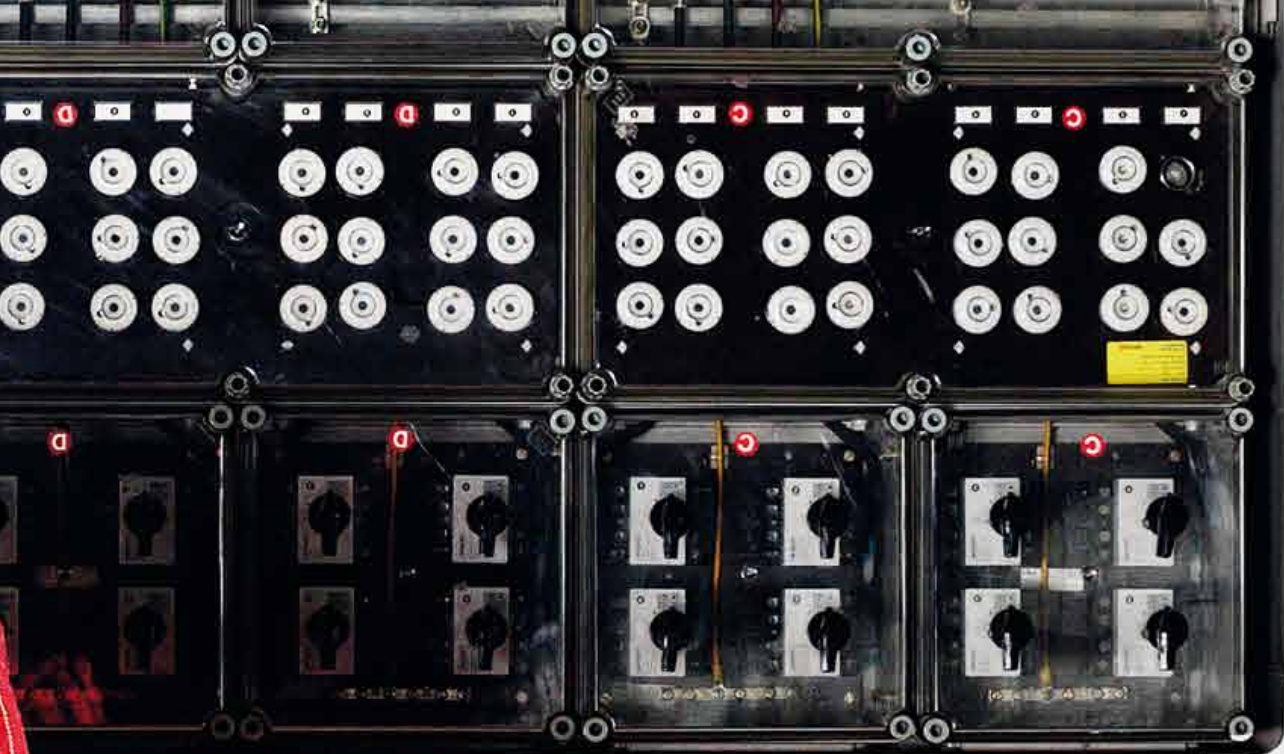
CONTEMPORARY DESIGN
MEETS DUTCH HERITAGE

UPHOLSTERY COLLECTIONS

WWW.KOBE.EU



TOUCAN

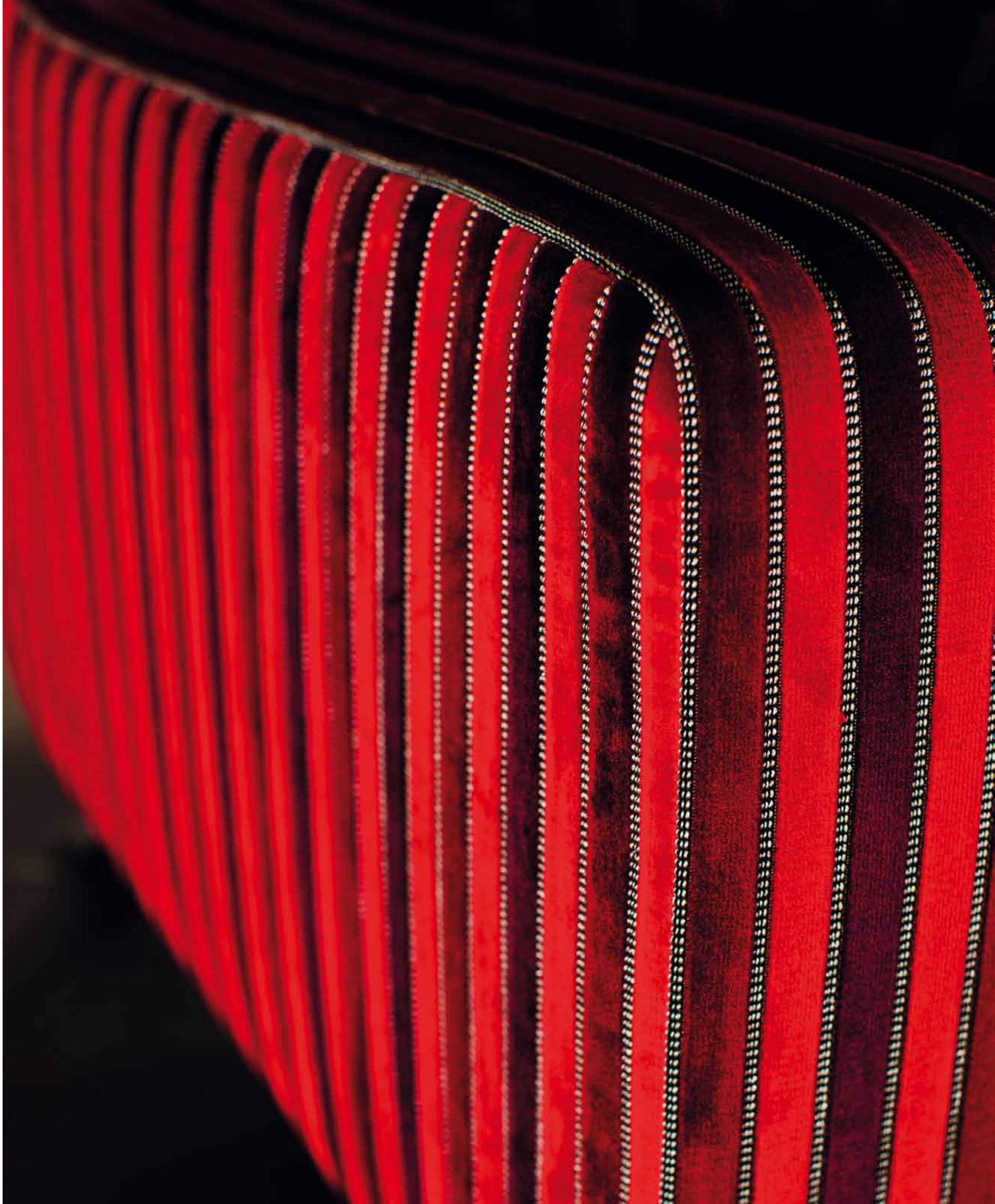


CONTEMPORARY DESIGN
MEETS DUTCH HERITAGE

UPHOLSTERY COLLECTIONS

WWW.KOBE.EU









CONTEMPORARY DESIGN
MEETS DUTCH HERITAGE

UPHOLSTERY COLLECTIONS

WWW.KOBE.EU

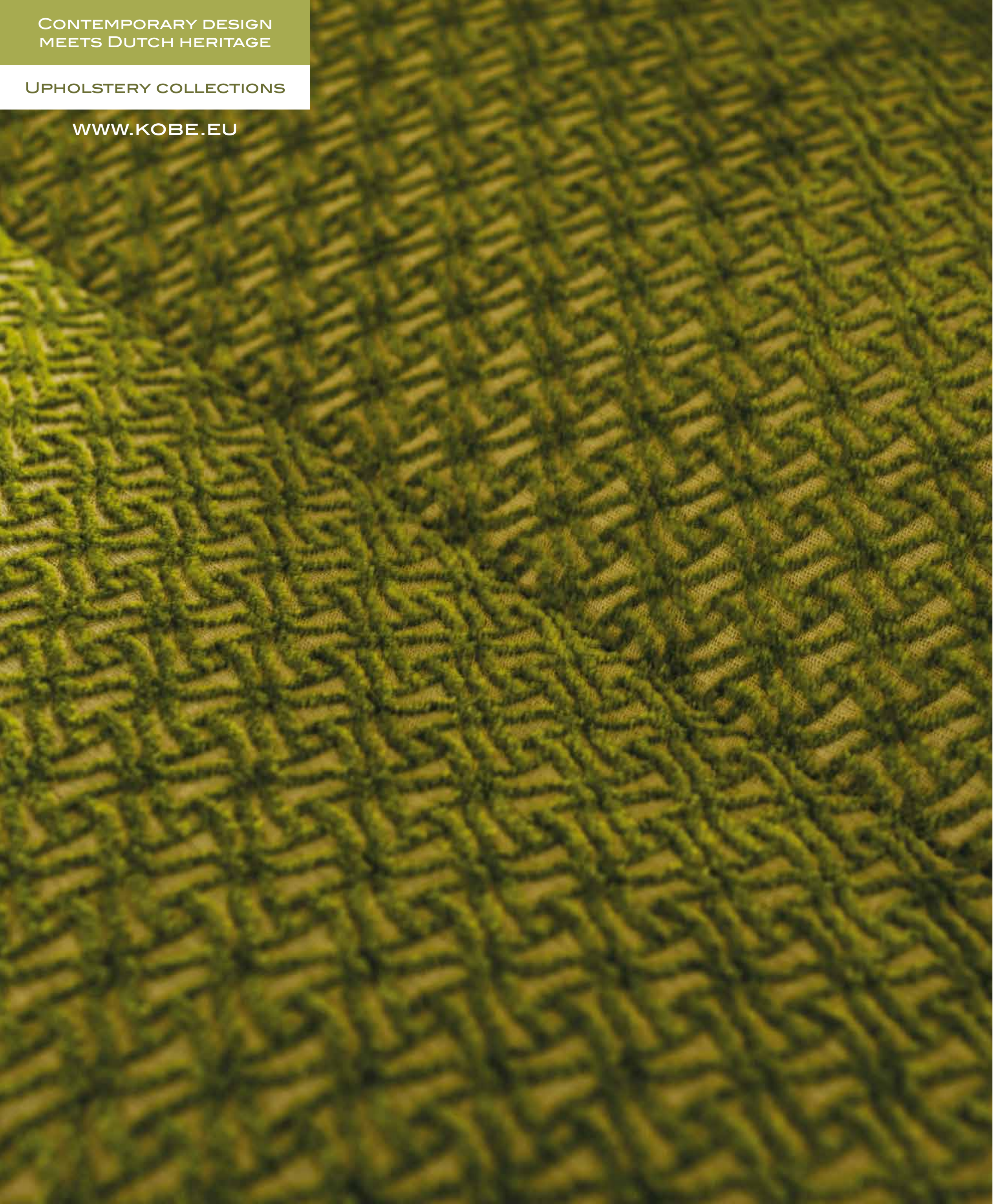
XAVIER

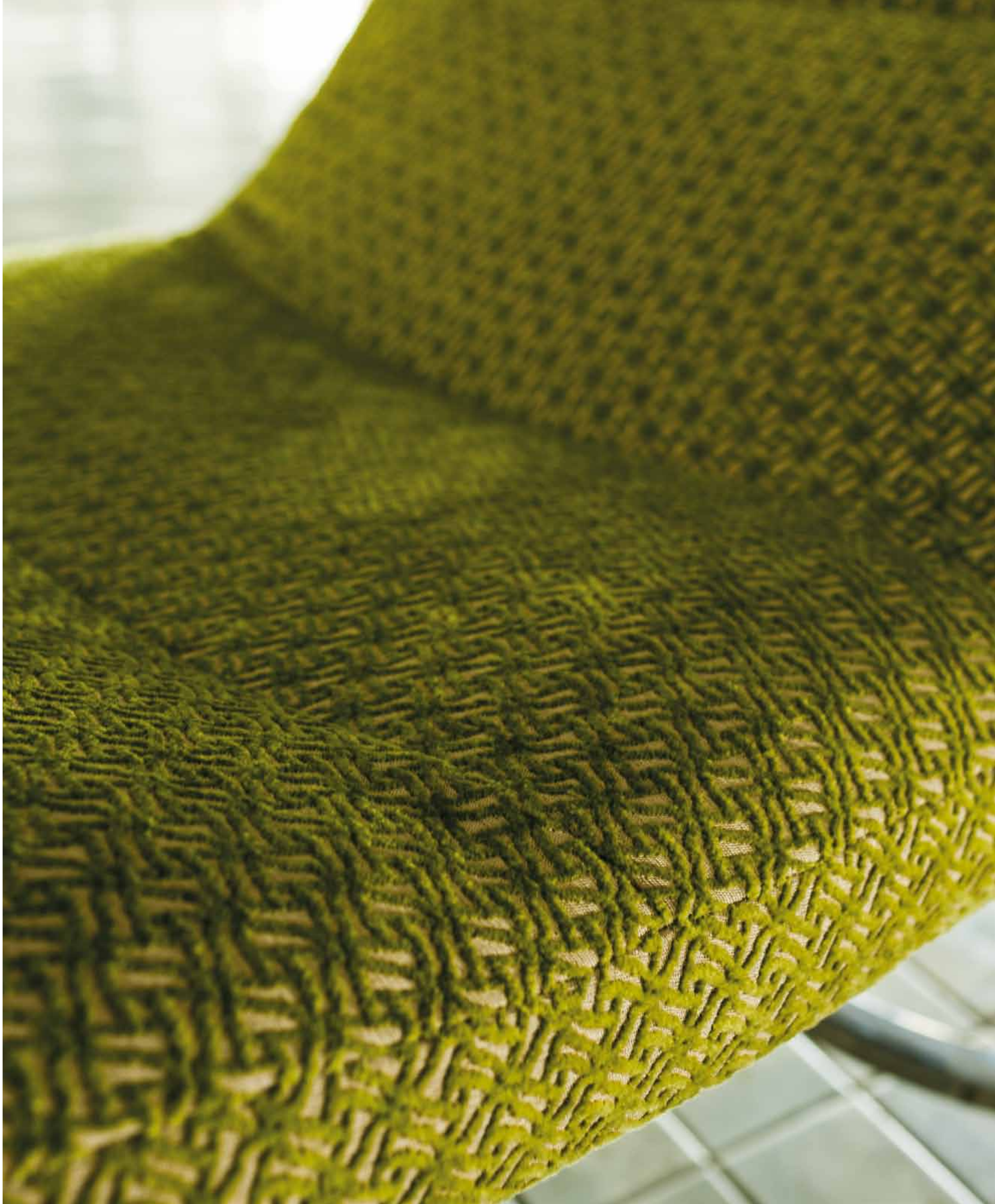


CONTEMPORARY DESIGN
MEETS DUTCH HERITAGE

UPHOLSTERY COLLECTIONS

WWW.KOBE.EU





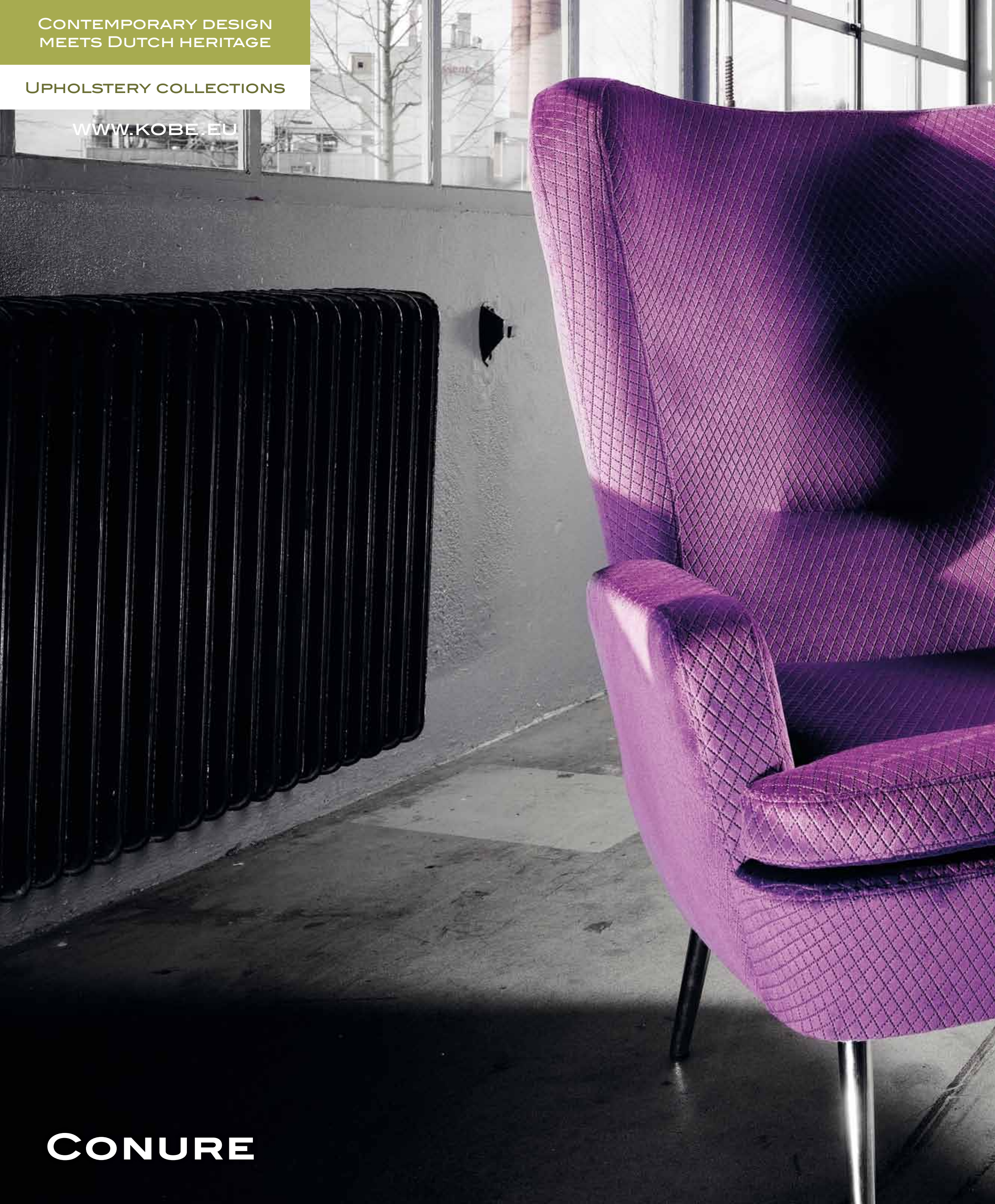




CONTEMPORARY DESIGN
MEETS DUTCH HERITAGE

UPHOLSTERY COLLECTIONS

WWW.KOBE.EU



CONURE

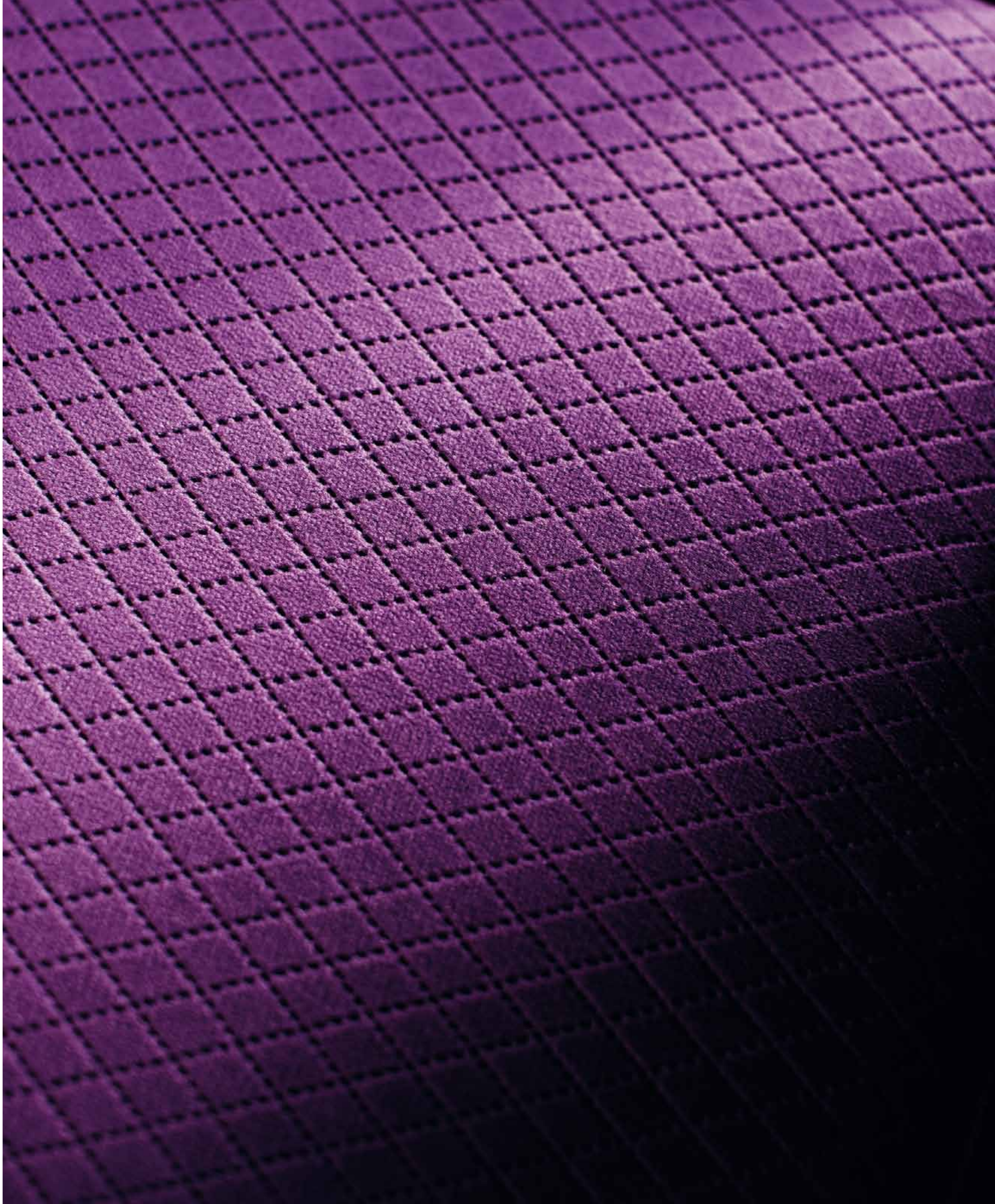


CONTEMPORARY DESIGN
MEETS DUTCH HERITAGE

UPHOLSTERY COLLECTIONS

WWW.KOBE.EU









CONTEMPORARY DESIGN
MEETS DUTCH HERITAGE

UPHOLSTERY COLLECTIONS

WWW.KOBE.EU

OSORNO



CONTEMPORARY DESIGN
MEETS DUTCH HERITAGE

UPHOLSTERY COLLECTIONS

WWW.KOBE.EU





CONTEMPORARY DESIGN
MEETS DUTCH HERITAGE

UPHOLSTERY COLLECTIONS

WWW.KOBE.EU



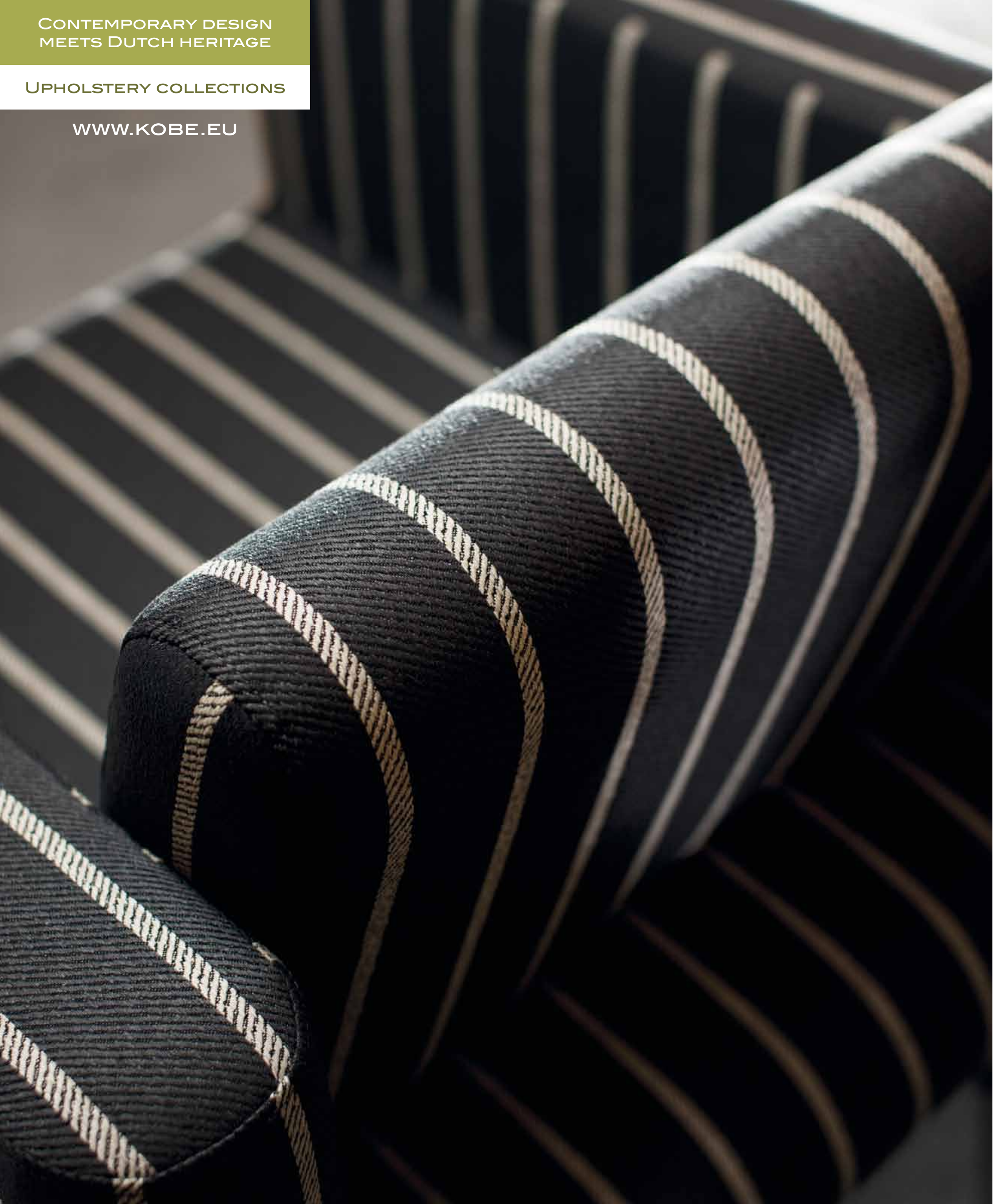
BUTAK

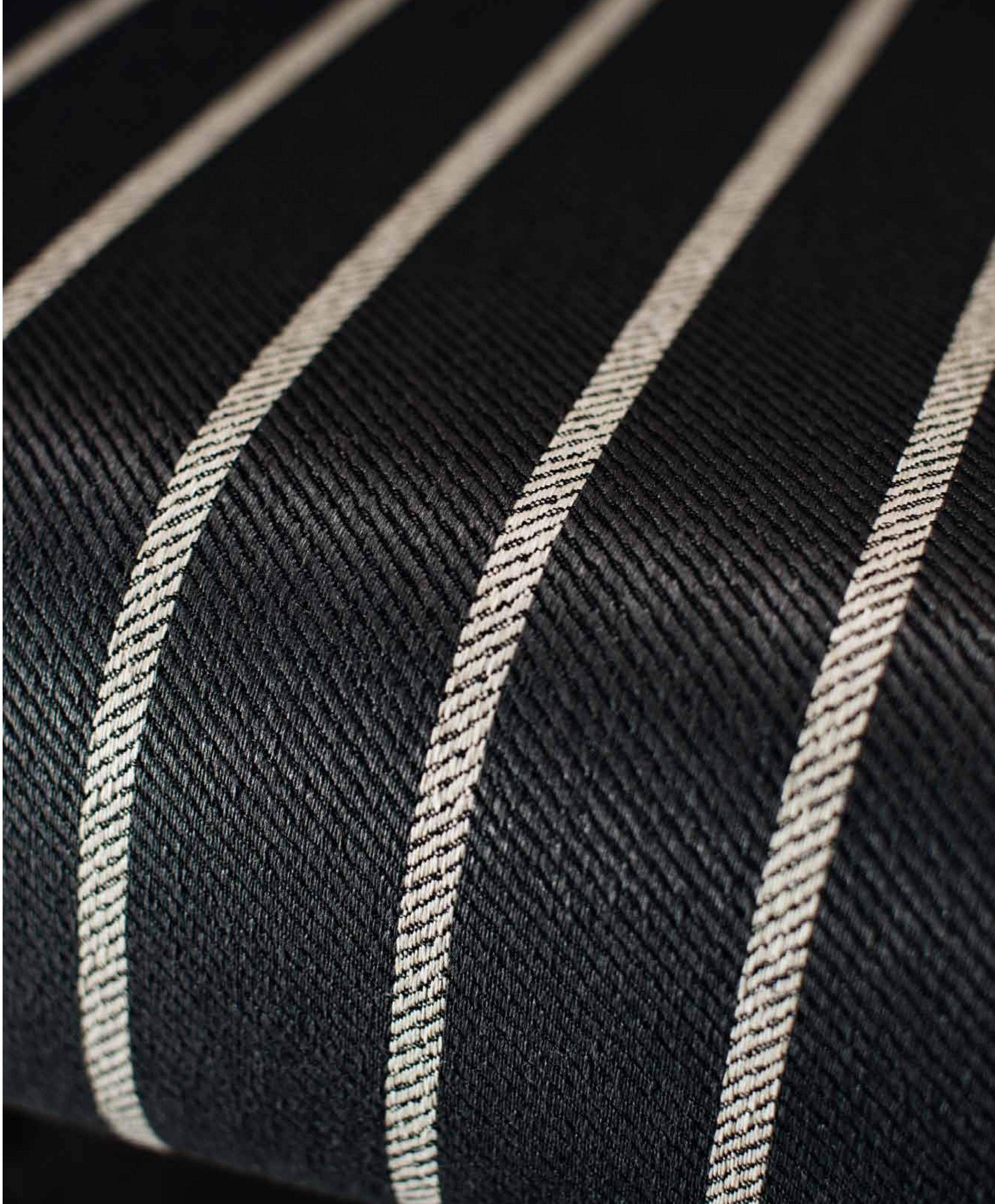


CONTEMPORARY DESIGN
MEETS DUTCH HERITAGE

UPHOLSTERY COLLECTIONS

WWW.KOBE.EU









CONTEMPORARY DESIGN
MEETS DUTCH HERITAGE

UPHOLSTERY COLLECTIONS

WWW.KOBE.EU



CAPTO



CONTEMPORARY DESIGN
MEETS DUTCH HERITAGE

UPHOLSTERY COLLECTIONS

WWW.KOBE.EU





CONTEMPORARY DESIGN
MEETS DUTCH HERITAGE

UPHOLSTERY COLLECTIONS

WWW.KOBE.EU

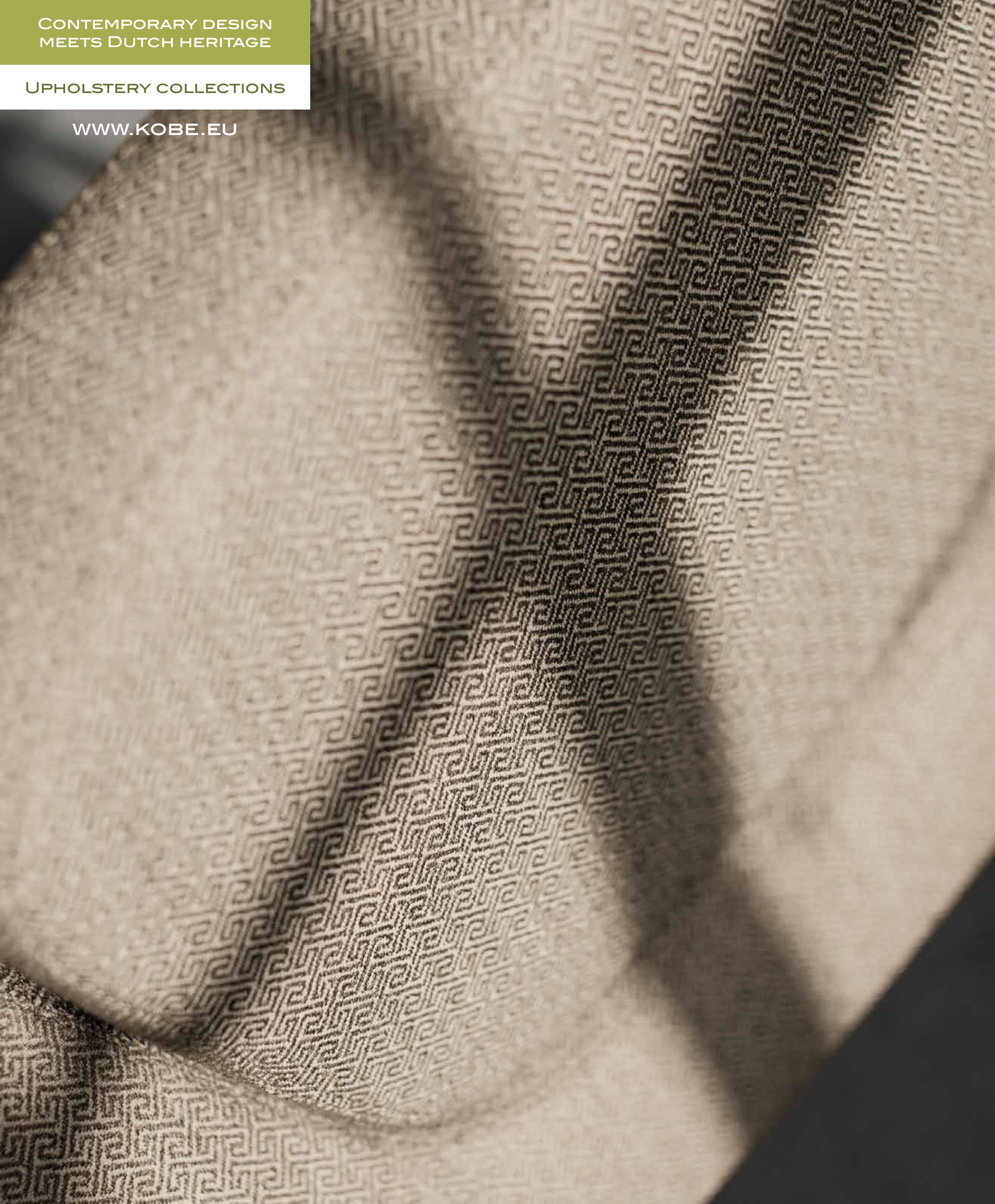
VERDI



CONTEMPORARY DESIGN
MEETS DUTCH HERITAGE

UPHOLSTERY COLLECTIONS

WWW.KOBE.EU







VISIT US
WWW.KOBE.EU

KOBEFAB INTERNATIONAL B.V. DE VEST 62, 5555 XP VALKENSWAARD,
P.O. BOX 286, 5550 AG VALKENSWAARD, NEDERLAND.

WWW.KOBE.EU